

**Internal REPORT No 112/2025**

**„INSTALLATION TESTS OF M-BASE GLUE UNDERLAY  
AND DRYBACK LVT FLOOR WITH M-BASE GLUE UNDERLAY”**

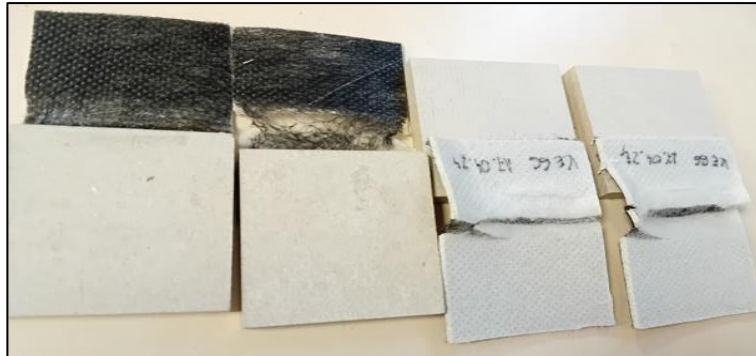
**1. Research subject**

<b>Subfloor:</b>	Concrete block or cement plate
<b>Adhesive #1 – 1<sup>st</sup> layer:</b>	UZIN KE66, UZIN KE68, UZIN KE 2000S, THOMSIT K 188E
<b>Underlay type:</b>	M-BASE GLUE
<b>Adhesive #2 – 2<sup>nd</sup> layer:</b>	UZIN KE66, UZIN KE68, UZIN KE 2000S, THOMSIT K 188E
<b>Floor:</b>	DRYBACK LVT FLOOR

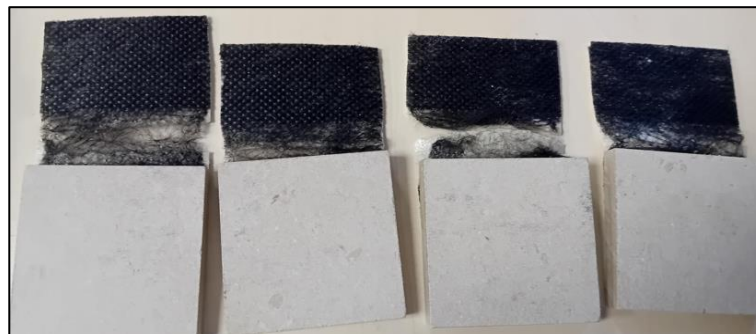
**2. Shear force tests – M-BASE GLUE Installation**

<b>Standard:</b>	<b>EN ISO 22632:2019</b> – Adhesives - Test methods for adhesives for floor and wall coverings - Shear test								
<b>Results:</b>	<p>Shear force values for the M-BASE GLUE underlay installed on the cement plates with the use of the UZIN KE 66, UZIN KE 68, UZIN KE 2000 S and THOMSIT K 188E adhesives are shown in the Table below:</p> <table><tr><th>M-BASE GLUE + UZIN KE 66</th><th>M-BASE GLUE + UZIN KE 68</th><th>M-BASE GLUE + UZIN KE 2000S</th><th>M-BASE GLUE + THOMSIT K 188 E</th></tr><tr><td>0,248 +/- 0,006 N/mm<sup>2</sup></td><td>0,261 +/- 0,014 N/mm<sup>2</sup></td><td>0,164 +/- 0,035 N/mm<sup>2</sup></td><td>0,176 +/- 0,014 N/mm<sup>2</sup></td></tr></table> <p>Standard requires at least 0,300 N/mm<sup>2</sup> and all tested adhesives showed lower values of the shear force. However, it should be emphasized that all tests ended not in the breaking of the adhesion layer, but in the damage of the underlay. Thus, all adhesives should meet the requirements if the underlay would be much stronger.</p>	M-BASE GLUE + UZIN KE 66	M-BASE GLUE + UZIN KE 68	M-BASE GLUE + UZIN KE 2000S	M-BASE GLUE + THOMSIT K 188 E	0,248 +/- 0,006 N/mm <sup>2</sup>	0,261 +/- 0,014 N/mm <sup>2</sup>	0,164 +/- 0,035 N/mm <sup>2</sup>	0,176 +/- 0,014 N/mm <sup>2</sup>
M-BASE GLUE + UZIN KE 66	M-BASE GLUE + UZIN KE 68	M-BASE GLUE + UZIN KE 2000S	M-BASE GLUE + THOMSIT K 188 E						
0,248 +/- 0,006 N/mm <sup>2</sup>	0,261 +/- 0,014 N/mm <sup>2</sup>	0,164 +/- 0,035 N/mm <sup>2</sup>	0,176 +/- 0,014 N/mm <sup>2</sup>						

**UZIN KE 66:**



**UZIN KE 68:**



### 3. Shear force tests – DRYBACK LVT Floor Installation on the M-BASE GLUE

<b>Standard:</b>	<b>EN ISO 22632:2019</b> – Adhesives - Test methods for adhesives for floor and wall coverings - Shear test								
<b>Results:</b>	Shear force values for the Dryback LVT floor installed on the M-BASE GLUE underlay with the use of the UZIN KE 66, UZIN KE 68, UZIN KE 2000S and THOMSIT K 188E adhesives measured are shown in the Table below:								
	<table><tr><th><b>DRYBACK LVT FLOOR + UZIN KE 66 + M-BASE GLUE</b></th><th><b>DRYBACK LVT FLOOR + UZIN KE 68 + M-BASE GLUE</b></th><th><b>DRYBACK LVT FLOOR + UZIN KE 2000 S + M-BASE GLUE</b></th><th><b>DRYBACK LVT FLOOR + THOMSIT K 188 E + M-BASE GLUE</b></th></tr><tr><td>0,227 +/- 0,013 N/mm<sup>2</sup></td><td>0,892 +/- 0,032 N/mm<sup>2</sup></td><td>0,345 +/- 0,056 N/mm<sup>2</sup></td><td>0,393 +/- 0,041 N/mm<sup>2</sup></td></tr></table>	<b>DRYBACK LVT FLOOR + UZIN KE 66 + M-BASE GLUE</b>	<b>DRYBACK LVT FLOOR + UZIN KE 68 + M-BASE GLUE</b>	<b>DRYBACK LVT FLOOR + UZIN KE 2000 S + M-BASE GLUE</b>	<b>DRYBACK LVT FLOOR + THOMSIT K 188 E + M-BASE GLUE</b>	0,227 +/- 0,013 N/mm <sup>2</sup>	0,892 +/- 0,032 N/mm <sup>2</sup>	0,345 +/- 0,056 N/mm <sup>2</sup>	0,393 +/- 0,041 N/mm <sup>2</sup>
	<b>DRYBACK LVT FLOOR + UZIN KE 66 + M-BASE GLUE</b>	<b>DRYBACK LVT FLOOR + UZIN KE 68 + M-BASE GLUE</b>	<b>DRYBACK LVT FLOOR + UZIN KE 2000 S + M-BASE GLUE</b>	<b>DRYBACK LVT FLOOR + THOMSIT K 188 E + M-BASE GLUE</b>					
0,227 +/- 0,013 N/mm <sup>2</sup>	0,892 +/- 0,032 N/mm <sup>2</sup>	0,345 +/- 0,056 N/mm <sup>2</sup>	0,393 +/- 0,041 N/mm <sup>2</sup>						
Dryback LVT floor installed with the use of the UZIN KE 68 adhesive on the M-BASE GLUE underlay showed the highest shear force values, almost 3 times higher than the standard requirements (0,300 N/mm <sup>2</sup> ). In turn, adhesives UZIN KE 2000S and THOMSIT K 188E showed values only slightly above the required value. UZIN KE 66 glue showed shear force below 0,300 N/mm <sup>2</sup> .									

### 4. Summary

On the basis of the performed tests, it should be stated that **M-BASE GLUE underlay can be installed to the subfloor with the use of UZIN KE 66, UZIN KE 68, UZIN KE 2000S and THOMSIT K 188E adhesives.** Shear force as well as installation tests revealed a good adhesion of these tested glues with the underlay.

Dryback LVT floor tests with the use of the M-BASE GLUE demonstrated that UZIN KE 68 give the highest adhesion between floor and the underlay. Tests with the use of UZIN KE 2000S and THOMSIT K 180E glues showed that these adhesives meet minimal requirements. In turn, UZIN KE 66 did not reach minimal value of 0,300 N/mm<sup>2</sup>. **Performed tests proved that the best glue for the Dryback LVT floor installation on M-BASE GLUE underlay is UZIN KE 68 which is official DECORA recommendation. However, UZIN KE 2000S and THOMSIT K 188E could also be applied for this application.**

The person conducting the examination:

dr Arkadiusz Niemczyk