

Idé Flooring Sverige AB
c/o Ideflooring C/O Entreprenörsgat Östra
Hamngatan 1
411 10 GÖTEBORG

Emission measurements according to M1

(3 appendices)

Assignment

Emission measurement according to “M1 Emission Classification of Building Materials: Protocol for Chemical and Sensory Testing of Building Materials”, ver 15.11.2017, after 28 days of conditioning regarding volatile organic compounds, carcinogenic compounds (EU Regulation No 1272/2008 Annex VI, cat 1A and 1B), formaldehyde, ammonia and sensory acceptability.

Product/test specimen

Table 1.

Product type:	Flooring tiles
Product name:	Futura Public
Manufacturer:	Polynexx, China
Manufacturing date:	2024-03-10
Batch No:	100
Size of sample, packaging:	10 tiles 19 x 123 cm, in a retail box.
Arrived at RISE:	2024-02-14
Test specimen preparation:	Flooring scenario is used for the testing. Chemical testing: Two pieces of 19 x 26.5 cm were cut out from the tiles. The pieces were placed back-to-back and the cut edges and part of the surface were sealed with aluminium tape, leaving a total exposed surface area of 0.1 m ² . Sensory testing: Two pieces of 19 x 113 cm were cut out from the tiles. The pieces were placed back-to-back and the cut edges and part of the surface were sealed with aluminium tape, leaving a total exposed surface area of 0.43 m ² .
Deviation from protocol:	No
Test period started, date:	2024-04-05
Conditions during ageing:	23 ± 2 °C, 50 ± 5 % RH
Emission samplings, date:	2024-05-03
Place for testing:	Chemistry and Applied Mechanics, Brinellgatan 4, Borås

RISE Research Institutes of Sweden AB

Postal address
Box 857
501 15 BORÅS
SWEDENOffice location
Brinellgatan 4
504 62 Borås
SWEDENPhone / Fax / E-mail
+46 10-516 50 00
+46 33-13 55 02
info@ri.se

This report may not be reproduced other than in full, except with the prior written approval of the issuing laboratory.

Accred. No. 1002
Testing
ISO/IEC 17025

Methods

The specimens were conditioned outside the testing chambers in separate conditioning containers (with air velocity of ca 0.2 m/s) in a room with controlled climate conditions of 23 ± 2 °C and 50 ± 5 % RH. The specimens were placed in the chambers three days before the measurements of the chemical emission and the sensory evaluation.

Table 2.

Chamber conditions of the test of chemical emissions

Test chamber volume:	0.27 m ³ , stainless steel
Temperature:	23 ± 1 °C
Relative Humidity:	50 ± 3 % RH
Air exchange rate:	0.5 h ⁻¹
Air velocity at specimen surface:	0.1 – 0.3 m/s
Area of sample:	0.1 m ²
Area specific air flow rate:	1.35 m ³ /m ² h

Table 3.

Chamber conditions of the test of sensory acceptability

Test chamber volume:	1.0 m ³ , stainless steel
Temperature:	23 ± 1 °C
Relative Humidity:	50 ± 3 % RH
Supply air flow rate:	0.6 l/s = 2.2 m ³ /h
Area of sample:	0.43 m ²

Table 4.

Emission sampling and analytical methods

Test	Sampling method	Adsorbent	Sampling volume (litre)	Analysis method / Quantification	Detection limit
VOC	ISO 16000-9:2006 ¹	Tenax TA	2.6 – 6.2	ISO 16000-6:2021 ² / FID quantification	1 µg/m ³
Formaldehyde	ISO 16000-9:2006 ¹	DNPH	24 - 31	ISO 16000-3:2022 /HPLC-UV	0.03 µg/sampler
Ammonia	ISO 16000-9:2006 ¹	Treated silica gel	258 - 318	Liquid chromatograph with conductivity detector ³	0.9 µg/sampler
Sensory evaluation	ISO 16000-28:2012 ⁴	--	--	Acceptability, Untrained panel of min 15 persons	--

¹) In accordance with ISO 16000-9:2006 and M1 protocol.

²) In accordance with ISO 16000-6:2021 and M1 protocol.

³) The determinations of the sampled silica gel tubes were done by Sahlgrenska Universitetssjukhuset, Miljökemiska laboratoriet, Göteborg, not accredited method

⁴) In accordance with M1 protocol, not accredited method.

Tenax TA and multisorbents were used as adsorption mediums for VOC. The tubes were thermally desorbed and analysed in accordance with ISO 16000-6:2021 (Indoor air — Part 6: Determination of organic compounds (VOC, VOC, SVOC) in indoor and test chamber air by active sampling on sorbent tubes, thermal desorption and gas chromatography using MS or MS FID). This means an analysis in a gas chromatograph and detection with a flame ionisation detector (FID) and mass selective detector (MS). The FID signals are used for compound

quantification. The TVOC is quantified as toluene equivalents. The mass selective detector is used for identification of compounds. The capillary column used is coated with 5% phenyl/ 95 % methylpolysiloxane. Tenax TA and multisorbents were also used as adsorption mediums for testing of volatile carcinogenic compounds, according to EU Regulation No 1272/2008 Annex VI, cat 1A and 1B), (exclusive formaldehyde), 0.001 mg/m³ and above.

The sampling of formaldehyde was carried out with DNPH samplers. The samplers were analysed according to ISO 16000-3:2022 (Indoor air – Part 3: Determination of formaldehyde and other carbonyl compounds in indoor air and test chamber air – Active sampling method), which means analysis on a liquid chromatograph with absorbance detector.

The sampling of ammonium was carried out with silicagel treated adsorbent tubes and analysis on a liquid chromatograph with conductivity detector. Minimum two subsequent samples were taken for the VOC determination, for the formaldehyde and for the ammonia respectively.

Results

The results relate only to the items tested.

Decision rule: When stating conformity to requirement documents, the average value of the measured result is compared to the requirement level. The uncertainty is not taken into consideration unless it is a demand to the applicable requirement document. Procedure "Simple acceptance" for handling the measurement uncertainty is applied according to document ILAC-G8:09/2019, "Guard band 0", shared risk <50 % probability for false acceptance.

The results of the chemical testing are expressed as area specific emission rates and as concentrations in a model room. The model room has a base area of 3 m x 4 m and a height of 2.5 m, with an air exchange rate of 0.5 h⁻¹. The wall area is 31.4 m², floor/ceiling area is 12 m², small area, like a door, is 1.6 m² and very small area, like sealant, is 0.2 m². Floor area is used for the calculation of the concentrations.

Calculation of the concentration from the emission rate:

$$Conc = \frac{SER_A \times A}{n \times V}$$

Conc = concentration of a VOC in the model room, in µg/m³
SER_a = area specific emission rate, in µg/m²h
A = area of sample, in m²
n = air exchange rate, in changes per hour
V = volume of the model room, in m³

Table 5.

Results of the chemical testing of **Futura Public** after 28 days

Compound	Concentration in model room mg/m ³	Emission rate mg/m ² h	Criteria M1 mg/m ² h
TVOC ⁵	0.055	0.068	< 0.2
Carcinogens	< 0.001	< 0.001	< 0.001
Single VOC (µg/m ³)	< EU-LCI	--	≤ EU-LCI
Formaldehyde	0.001	0.001	< 0.05
Ammonia ⁶	< 0.003	< 0.004	< 0.03

⁵⁾ The TVOC is the sum of the individual concentration ≥ 5 µg/m³ in model room.

⁶⁾ Not accredited method. Test report from Sahlgrenska Universitetssjukhuset: test report 24_13 dated 2024-05-17

Table 6.
Results of the sensory acceptability evaluation of **Futura Public**, after 28 days

Evaluator	Sensory evaluation	Criteria M1
1	0.82	
2	0.90	
3	0.94	
4	0.69	
5	0.98	
6	0.76	
7	1.00	
8	0.92	
9	0.93	
10	1.00	
11	0.84	
12	0.94	
13	0.73	
14	0.60	
15	1.00	
Arithmetic mean of acceptability ⁷	0.87	$\geq + 0.0$
Standard deviation	0.13	
90 % confidence interval of arithmetic mean	0.05	≤ 0.2

⁷⁾ Not accredited method.

The empty sensory test chamber acceptability was determined 2024-04-30. The mean acceptability vote of the empty chamber was ≥ 0.8 .

Interpretation of the results

The tested product **Futura Public** complies with all the requirements of M1 for the tested parameters.

Detailed results

Table 7.
Detailed results (emission rates) of the chemical testing after 28 days

Sample	TVOC (mg/m ² h) as toluene equivalents between C ₆ -C ₁₆	Formaldehyde (mg/m ² h)	Ammonia (mg/m ² h)	Carcinogens (mg/m ² h) between C ₆ -C ₁₆
1	0.068	0.001	< 0.004	< 0.001
2	0.069	0.002	< 0.005	< 0.001

Table 8.

Single VOCs above 5 µg/m³ in the model room

Single VOCs	CAS number	Retention time (min)	ID ⁸	Emission rate (µg/m ² h)	Concentration (µg/m ³)
Single VOCs C₆-C₁₆:		6.2 - 38			
2-Butyl acetate	105-46-4	9.9	B	16	13
1-Methoxy-2-propyl acetate	108-65-6	13.5	B	9	8
Cyclohexanone	108-94-1	15.4	B	36	29
Benzaldehyde	100-52-7	18.0	B	7	5
TVOC	--	6.2 - 38	B	68	55
Volatile Carcinogens ⁹		6.2 - 38			
No substances detected	--	--	B	< 1	< 1
Single VOC outside C₆ – C₁₆:					
VVOC (< C ₆) ¹⁰		5.0 – 6.2			
No single VVOC detected	--	--	B	< 2	< 5
SVOC (C ₁₆ – C ₂₂) ¹¹		38 - 51			
No single SVOC detected	--	--	B	< 2	< 5

⁸⁾ ID: A = quantified compound specific, B = quantified as toluene equivalent

⁹⁾ Volatile carcinogens = VOCs according to EU Regulation No 1272/2008 Annex VI, cat 1A and 1B

¹⁰⁾ VVOC = very volatile organic compounds, as defined in ISO 16000-6

¹¹⁾ SVOC = semi-volatile organic compounds, as defined in ISO 16000-6

TVOC expressed in µg/m²h and µg/m³ is the sum of all individual substances with concentrations ≥ 5 µg/m³ (in toluene equivalents).

Level of identification of compounds is 100 % for all compounds ≥ 5 µg/m³.

Table 9.

Detected EU LCI-compounds ≥ 5 µg/m³ quantified by compound specific response factor.

Single VOCs	CAS number	Retention time (min)	ID ⁸	Concentration (µg/m ³)	EU LCI _i (Dec 2022) (µg/m ³)
Single VOCs C₆-C₁₆:					
1-Methoxy-2-propyl acetate	108-65-6	13.5	A	18	650
Cyclohexanone	108-94-1	15.4	A	43	1400

⁸⁾ ID: A = quantified compound specific, B = quantified as toluene equivalent

Measurements uncertainty

The expanded measurement uncertainty of VOC result is 25 % (rel) and formaldehyde is 36 % (rel). For ammonia the measurement uncertainty is estimated to 14 % (rel).

See Appendix 1 for a gas chromatogram from the VOC determination and Appendix 2 for a photo of the test specimen. Appendix 3 is the Sampling report received from the customer.

RISE Research Institutes of Sweden AB
Chemistry and Applied Mechanics - Chemical Product Safety

Performed by

Examined by

Ulrika Johansson

Fredrik Solhage

Appendices

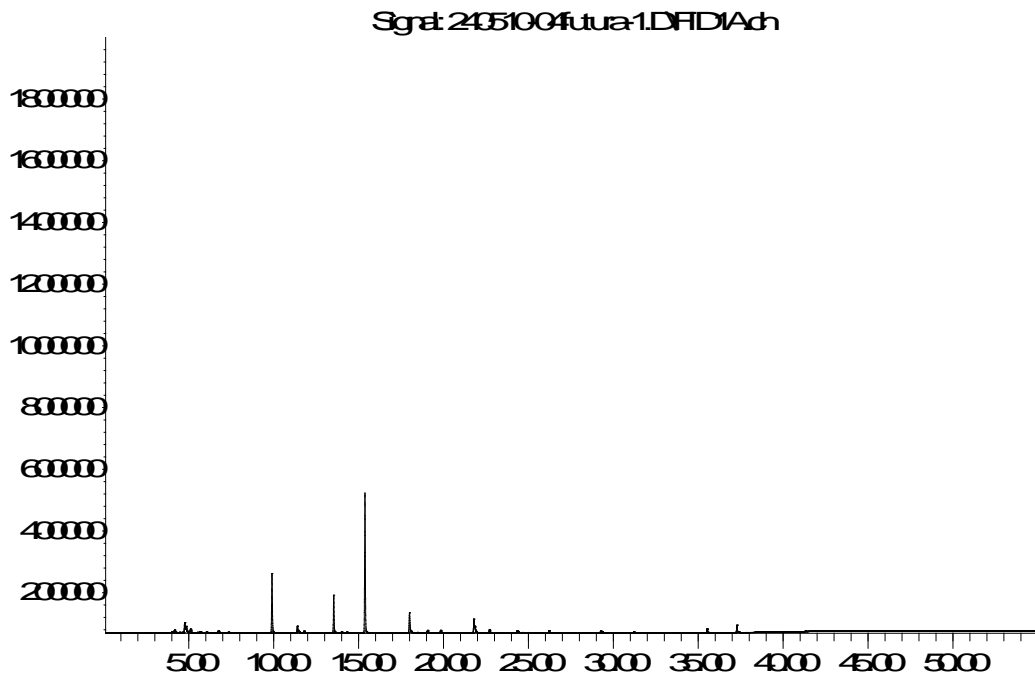
1. Gas Chromatogram
2. Photo of test specimen
3. Sampling report

Appendix 1

Gas chromatogram

Sample: **Futura Public**, after 28 days

Abundance



Time >

TVOC between C₆ and C₁₆, means compounds eluting between 6.2 and 38 minutes.

Appendix 2

Photo of test specimen



The test specimens of the chemical evaluation.

Appendix 3

Sampling Report

Sampler (Name, Company, contact info): Ideflooring C/O Entreprenörsgatan Östra Hamngatan 1 41101 Göteborg	Manufacturer of the product (Company, address): Polynexx NO 3 Chun Pu Road Auto Accesories Park Xin Gou Town Funning County Jaingsu Province China
Name of product: Futura Public	Type of product: Pvcfree Biobased Luxury tile
Manufacturing Date: 18/3-24	Batch No: 100
Date of sampling:	Amount/size of material sampled: 3 m2 Packing material: Plastic and cardboard
Sample is taken from: Production line <input type="checkbox"/> # Stock / Storage <input type="checkbox"/> Miscellaneous <input type="checkbox"/> -where, specify:	How was the product stored before sampling? Direct from the line / By plane from China
If a sub-sample was collected from a larger material amount, describe how the sub-sample was taken:	
Observations and remarks:	
Confirmation I hereby confirm that the sample was selected, taken and packed in accordance with the instructions.	
Date: 24-03-22	Signature: Robert Johnson

Verification

Transaction 09222115557518527343

Document

1256267 Idéflooring, Futura Public, M1

Main document

9 pages

Initiated on 2024-05-28 10:23:10 CEST (+0200) by Ulrika Johansson (UJ)

Finalised on 2024-05-28 10:51:55 CEST (+0200)

Signatories

Ulrika Johansson (UJ)

RISE Research Institutes of Sweden AB

Company reg. no. 556464-6874

ulrika.johansson@ri.se

Signed 2024-05-28 10:23:11 CEST (+0200)

Fredrik Solhage (FS)

fredrik.solhage@ri.se

Signed 2024-05-28 10:51:55 CEST (+0200)

This verification was issued by Scrive. Information in italics has been safely verified by Scrive. For more information/evidence about this document see the concealed attachments. Use a PDF-reader such as Adobe Reader that can show concealed attachments to view the attachments. Please observe that if the document is printed, the integrity of such printed copy cannot be verified as per the below and that a basic print-out lacks the contents of the concealed attachments. The digital signature (electronic seal) ensures that the integrity of this document, including the concealed attachments, can be proven mathematically and independently of Scrive. For your convenience Scrive also provides a service that enables you to automatically verify the document's integrity at: <https://scrive.com/verify>

